

Eclipse

(c) 2014 Narrelle M Harris



Tu - rn to face the sun bla - zing bright ev - ery thing warm and bright



But there's some-thing co - old-er at your sho-ould - er Be-hind you, you know there is



a sha - a - dow Keep your eye on the light keep your back to the sha - dow



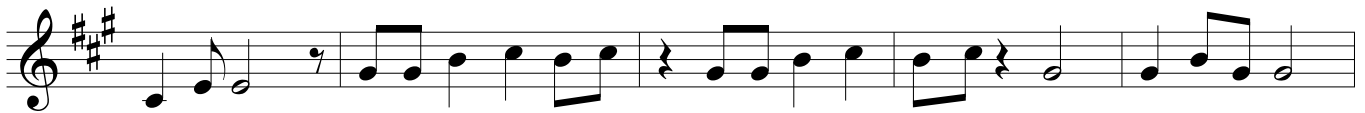
dark as night and ma-ay-be you won't see it and ma-ay-be it won't



see in-to yo - u That sha - dow e - clips - es your bet - ter self There's strength in that



da - ark - ness if you ne - ed it You'd bet - ter you'd bet - ter Hope to God you won't



ne - ed it. And it does not for - get And it will not for - give Fight it fi - ight it



for as lo - ong as you live.